

User:  
Camera: CinCam CMOS 1203  
Serial: 1203-U2-4521-0117  
Accessory Type: plain  
Date: 2026/06/23 火曜日  
Type: Single Measurement

---

Frames: 24  
Frequency:  
Pixel Size: 1600 x 1200  
Comment:

---

Exposure Time: 450 us  
Gain: 1.00 x  
Brightness: invalid

Type:  
Wavelength: 1064 nm  
Manufacturer:  
Model:  
Serial Number:  
Polarization:  
Output Power:

---

Operation Mode: CW  
Pulse Energy:  
Pulse Width:  
Pulse Frequency:  
M<sup>2</sup>:  
Comment:

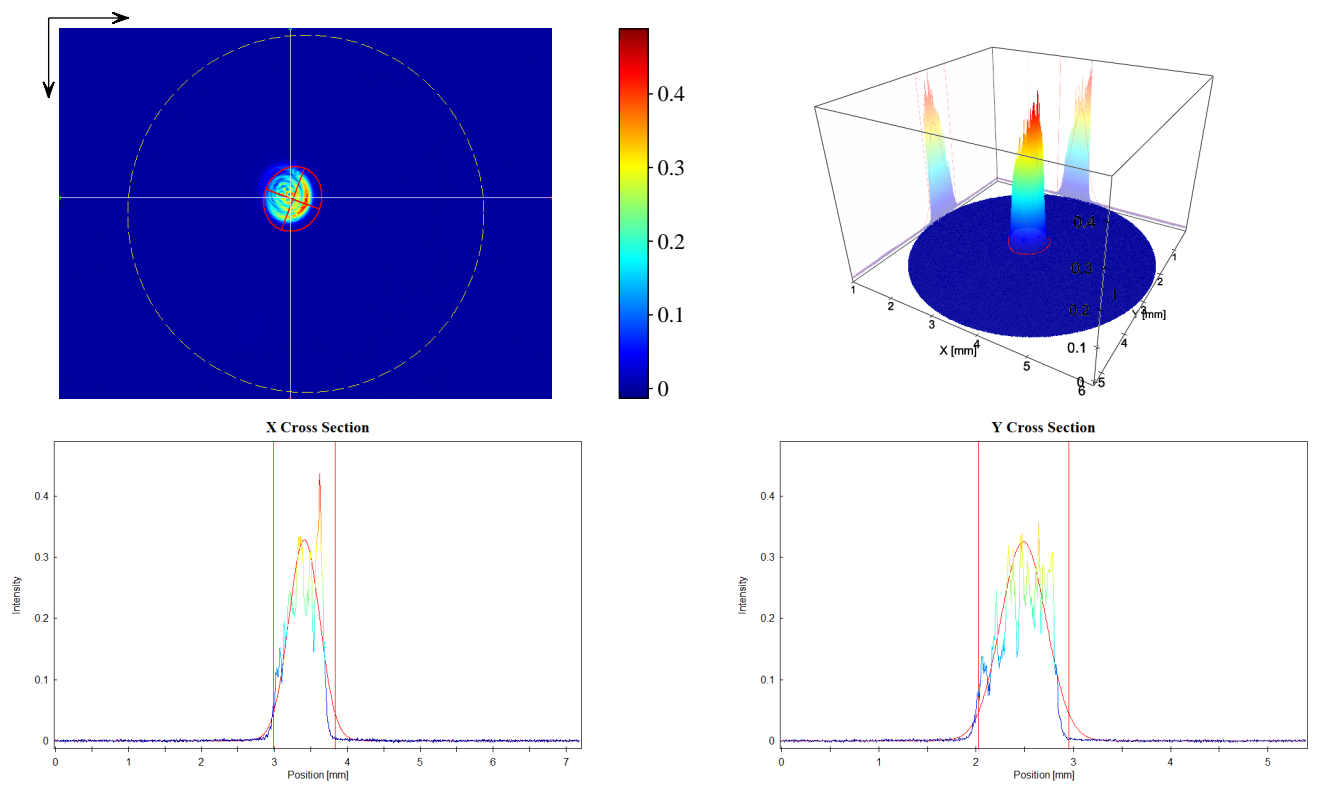
Beam Attenuator:  
Beam Splitter:  
Focusing Element:  
Other Optical Units:

---

Laser Temp.:  
Ambient Temp.:  
Humidity:

---

Background: yes  
Flat Field: no  
Angular Response: no  
Baseline: yes  
Linearity: no



**Statistic**

Number of Pixel: 268496  
Power: 4912.  
Peak: 0.4881  
Peak Pos x: 3.605 mm  
Peak Pos y: 2.507 mm  
SNR: 53.9 dB

**Gauss-Fit ( 13.53 % ~ 1/e<sup>2</sup> )**

Exponent: 2.00  
Centroid x: 3.409 mm  
Centroid y: 2.483 mm  
--- Width Lab ---  
Width x: 0.8510 mm  
Width y: 0.9406 mm  
--- Width Beam ---  
Width Major: 0.9543 mm  
Width Minor: 0.8356 mm  
Azimuth Angle: -69.56 deg  
Ellipticity: 0.876  
Eccentricity: 0.483  
---  
Cross-Sect. Area: 0.6263 mm<sup>2</sup>  
Power Fraction: 87.28 %  
GFI: 0.850  
Correlation: 0.400